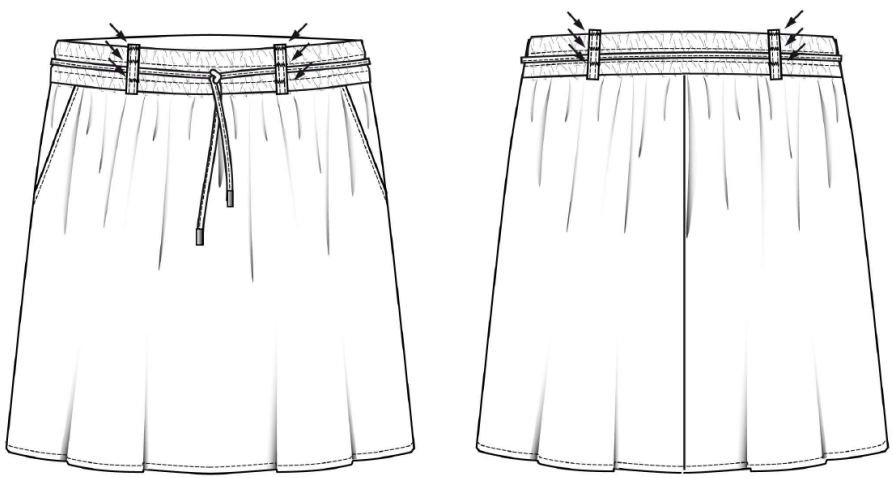

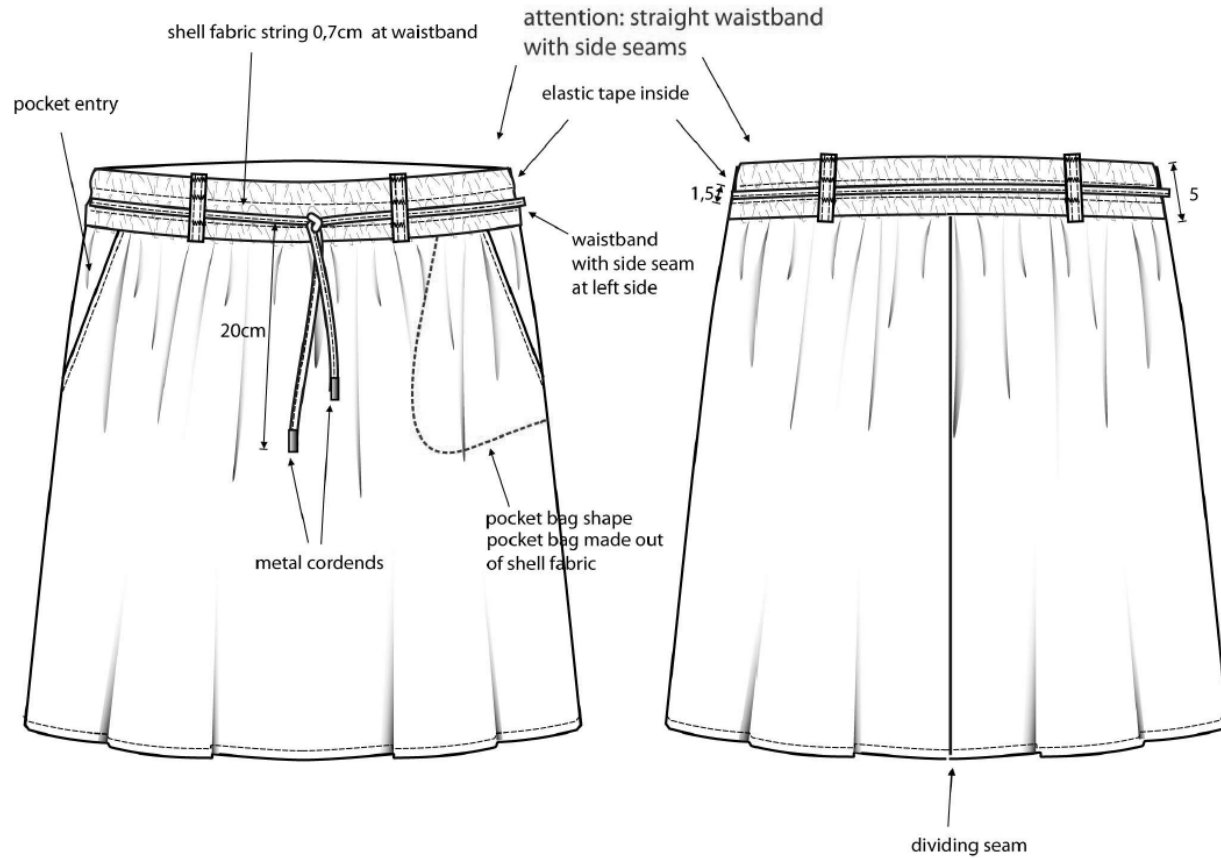


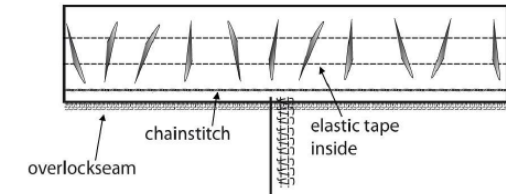
Sketch	Notes	Description
	<p>↗ = bartack Eyelet button holes</p> <p>Measures Backlength 56 1/2 hem 60</p> <p>Measurements <u>only</u> for size 38!</p>	<p>Details See detailed sketch on next page</p> <p>Attention No lining</p> <p>Stitching</p> <ul style="list-style-type: none"> • Waistband: visible in the middle (see sketch) • Waistband below: sink stitch • Pocket entry: 0.2 • Loops: 0.2 • Shell fabric string: 0.2 • Hem: 1.0 <p>Workmanship</p> <ul style="list-style-type: none"> • Skirt without lining • Side seam at waistband only at left side • Inner waistband: clean closed, with elastic inside • Front pocket entry: turn over with shell fabric pocket bag • Loops: 1x 5cm, 4 pcs • Shell fabric string: ends with cord ends • Hem: turn in, to overedge • Shell fabric string at waistband
<p>Pictures For style only (not for color)</p> 	<p>Colors</p> <p>As per sample pattern Pantone 11-4001 TCX Brilliant White Pantone 19-0303 TCX Jet Black</p> <p>Eyelet Pantone 13-0946 TCX Jurassic Gold</p>	

Detailed sketch



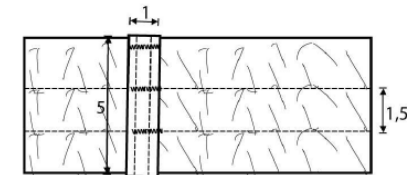
Description

Inner waistband



Loops

Insert at waistband below



Measures

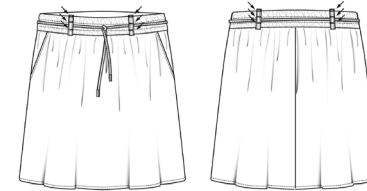
Measurements only for size 38!

Product **Sketch**

Description Female skirt, regular waist, A-line

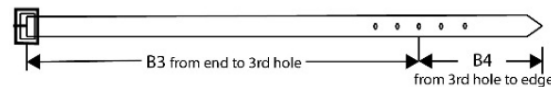
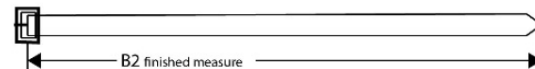
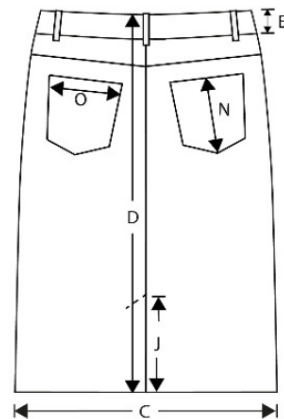
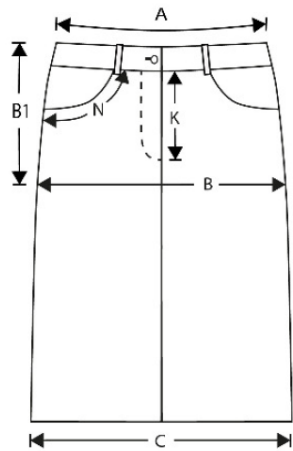
Quality Printed viscose, non-stretch

Notes Shrinkage must be checked in the factory
Production must pay attention to measurement details



Measurement table in cm

Section	Description	Add	34	36	38	40	42	44	46
A	1/2 waist relaxed	-	35.0	37.0	39.0	41.0	43.0	45.5	48.0
A1	1/2 waist extended	-	46.0	38.0	50.0	52.0	54.0	56.5	59.0
	length of elastic tape incl. seam encore	-	72.0	76.0	80.0	84.0	88.0	93.0	98.0
B	1/2 low hip	-	49.0	51.0	53.0	55.0	57.0	59.5	62.0
B1	distance for hip	-	20.0	20.0	20.0	20.0	20.0	20.0	20.0
C	1/2 hem	+0.5	56.0	58.0	60.0	62.0	64.0	66.5	69.0
D	backseam 50 <	+0.5	56.0	56.0	56.0	56.0	58.0	58.0	58.0
E	waistband height	-	5.0	5.0	5.0	5.0	5.0	5.0	5.0



Product		Sketch
Description	Female skirt, regular waist, A-line	
Quality	Printed viscose, non-stretch	
Manufacturer	Manufacturer name	

Material listing									
Group	Description	Code	Buy	Supplier description	Placement	Supplier	Supplier code	Size	Demand
OS	Fabric	1234-56	-	Printed viscose non-stretch	Shell + pocket bag	AAA	4105 navy-white	-	0.85
EI	Interlining	X1230001	Buy	Thin interlining 150cm	= A	BBB	2000 white	-	0.20
GA	Yarn	X3210020	Buy	Sewing thread coats 120	Overlock	CCC	C8906 dark blue	120	160
GA	Yarn	X3211080	Buy	Sewing thread coats 80	Top stitch & bar tacks	CCC	C8906 dark blue	80	24
GA	Yarn	X3211080	Buy	Sewing thread coats 80	Stitching inside	CCC	C8906 dark blue	80	36
BA	Ribbon	X7710523	Buy	Tape, flat elastic, 45mm	Inside waistband	DDD	1000 black	4.5cm	0.90
BG	Hanger	90010	-	Clip hanger	-	EEE	000 used	-	1.00
ET	Sew-in label	84040	Buy	Sew-in SK123	-	FFF	100 black	-	1.00
GR	Size label	80072	Buy	Size label SK412	-	FFF	501 nature	-	1.00
PE	Price ticket	82012	-	Price ticket SK 612	-	FFF	999 undefined	-	1.00
TGG	Care label	81018	Buy	Loop label SK211	-	FFF	200 white	-	1.00
HM	Additional items	95000	-	Shipping tag	-	FFF	200 white	-	0.14
KB	Tape	93100	Buy	Carton box tape 50mm	-	GGG	800 brown	-	0.20
VM	Packing material	99101	Buy	Tag pin 50mm	-	GGG	200 white	-	1.00
VM	Packing material	99199	Buy	Box 650x600x120mm	-	GGG	999 undefined	-	0.20
VM	Packing material	99052	Buy	Poly foil 120x140cm	-	GGG	999 undefined	-	0.14
VM	Packing material	99105	Buy	Tissue 50x32cm	-	GGG	999 undefined	-	2.00